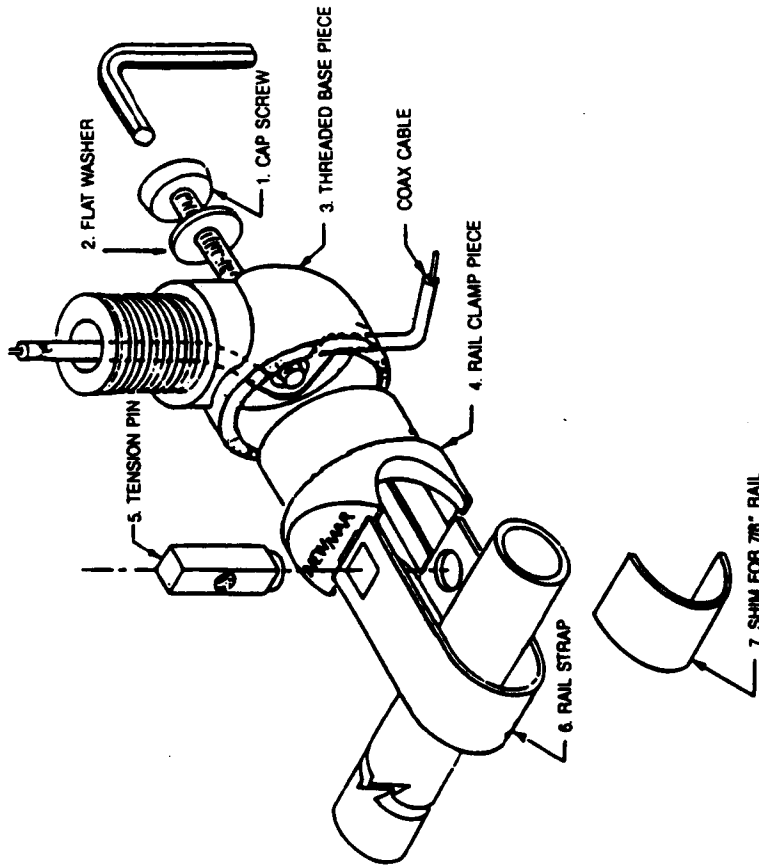


RAILFAST -- MODEL 311N
Installation Drawing

We sincerely hope that the patented RailFast Antenna Mount is satisfactory for your application.



1. TIGHTEN THE CAP SCREW WITH THE ALLEN WRENCH SECURELY, USING YOUR HAND.
 2. RETIGHTEN IN 24 HRS.
- DO NOT USE PLIERS OR OTHER DEVICE.

RAILFAST IS COVERED BY U.S. PATENT NUMBER 4546949

U.S.A.
P.O. Box 1306
Newport Beach, CA 92663
Phone: (714) 751-0488
Fax: (714) 957-1621
E-mail: sales@newmarpower.com

EURO:
Phone: +31-35-603-2494
Fax: +31-35-603-2149

www.newmarpower.com

M-RLFAST-B 8/00

RailFast.

INSTALLATION INSTRUCTIONS

Model: 311-N

Antenna Mount for 1" and 7/8" Railings

The RailFast comes assembled — it will be necessary to take it apart prior to installation on your railing. Use the Allen wrench provided to unthread the cap screw. Then pull the threaded base and rail clamp pieces away from the rail strap assembly.

Once apart, notice that the device consists of the following pieces (reference numbers refer to exploded diagram on back):

- 1) Cap Screw
- 2) Flat Washer
- 3) Threaded Base Piece
- 4) Rail Clamp Piece
- 5) Tension Pin
- 6) Rail Strap
- 7) Shim for 7/8 Rail

INSTALLATION

1. Slide rail strap over 1" rail with the square hole in the strap "up".
2. If the rail is 7/8" diameter, place the shim on the inside of the "U" in the rail strap.
3. Insert the tension pin, round end down through the square hole, keeping the threaded hole at a right angle to the rail.
4. Slide the rail clamp piece over the end of the rail strip until snug against the rail.

Important Note

If you plan to install a Loran Antenna where the cable feeds out the bottom of the coupler and through the mount, this must be done before the threaded base piece is assembled on the rail.

Pull the cable through the center of the threaded section only and thread the coupler on the piece, turning the cable as you go to prevent kinking and twisting. When the coupler is securely seated pull the cable through the bottom hole and press into the "C" shaped wire channel to prevent chafing.

5. Slide the threaded base piece over the rail clamp piece and thread the cap screw into the tension pin.
6. Adjust the position of the RailFast to the desired angle and tighten the cap screw with the Allen wrench, using *maximum hand force* to assure a tight assembly. Do not use pliers or other devices.